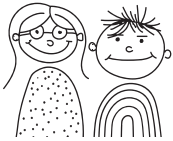




Understand through experience



BEING PARENT TO A CHILD WITH HEARING IMPAIRMENT: HOW TO START ELEMENTARY SCHOOL



WHICH ONE? WHICH IS THE BEST?

YIPPEE! I'M GOING TO SCHOOL!



THERE ARE MANY QUESTIONS... CONSULT WITH EXPERTS AND MOST IMPORTANTLY, WITH THE CHILD WITH HEARING IMPAIRMENT, TO CHOOSE THE BEST SCHOOL.

DEPENDS ON THE LEVEL OF YOUR CHILD'S COMMUNICATION, WHAT SCHOOLS YOU HAVE IN YOUR AREA, WHAT THE SPECIAL EDUCATION CENTER RECOMMENDS.



THE DECISION'S BEEN MADE, WE'VE PICKED A SCHOOL.

IF THE SCHOOL IS IN YOUR CATCHMENT AREA, IT'S OBLIGED TO ACCEPT YOUR CHILD. IF NOT, IT'S UP TO THE DIRECTOR OF THE SCHOOL.



Contact your local school or the special education centre to help you navigate the inclusive system in your country.

Contact the SEC for the hearing impaired to make an appointment.

Take your preliminary recommendation and any other documents required by the school with you to enroll.

SEC communicates with the school and clarifies the content of the recommendations.

DECEMBER

JANUARY

FEBRUARY

MARCH

APRIL

MAY

JUNE

Proceed with a special education diagnostic by the end of February at the latest at the SEC for the hearing impaired.

SEC will submit a report and a preliminary recommendation.

SEC will issue an Educational Advisory Committee Recommendation.



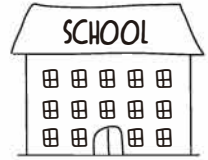
European Union
European Structural
and Investment Funds



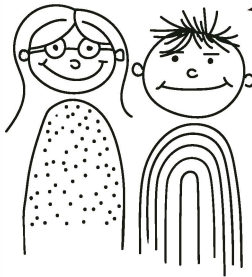
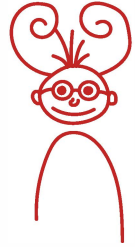
MINISTRY OF EDUCATION,
YOUTH AND SPORTS



TO AVOID ANY MISUNDERSTANDINGS,
MAKE AN APPOINTMENT WITH THE
SCHOOL.

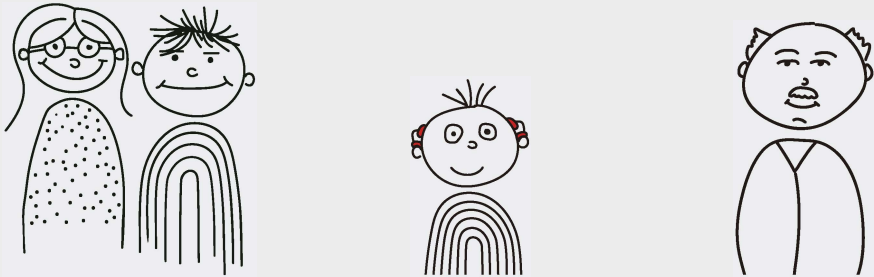


YOU CAN MEET BEFORE OR AFTER THE ENROLMENT, DEPENDING ON THE
TIME AVAILABLE TO YOU AND THE SCHOOL.



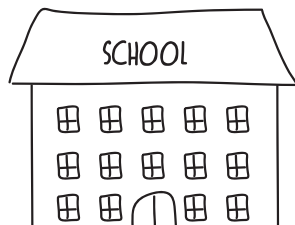
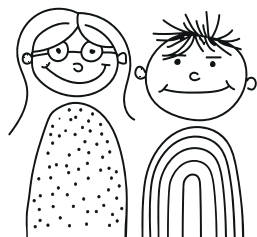
AND WHAT IS THE
PURPOSE OF THE
MEETING?

YOU GO THERE PRIMARILY
TO MEET EACH OTHER.



TALK ABOUT THE CHILD'S COMMUNICATION ABILITIES, WHAT HEARING TECHNOLOGY AIDS THEY USES AND HOW THEY WORK. DEMONSTRATE THE BASIC OPERATION OF THE HEARING TECHNOLOGY AID. IF YOU USE DISPOSABLE BATTERIES, SUGGEST LEAVING SPARE ONE AT SCHOOL. LET THE CHILD GET TO KNOW THE TEACHER SO THAT THEY CAN GET TO KNOW THE CHILD'S INTERESTS AND COMMUNICATION NEEDS.

1ST SEPTEMBER



AFTER THE CHILD STARTS TO GO TO SCHOOL, FOR EXAMPLE AT CLASS MEETINGS, EXPLAIN TO OTHER PARENTS WHAT'S BEHIND YOUR CHILD'S EAR SO THAT IT DOESN'T BECOME A BIG DEAL.



ASK YOUR CHILD'S CLASS TEACHER TO TALK ABOUT YOUR CHILD'S COMMUNICATION NEEDS WITH OTHER TEACHERS IN THE SCHOOL. THEY SHOULD THEN ALSO SENSITIVELY MENTION THE ISSUE OF HEARING IMPAIRMENT IN THEIR CLASSES.



Find a way to exchange information with the teacher.

1. Get everyone together regularly to talk about how school's going and what needs to be improved.
2. Keep exchanging information using a notepad.
3. Home preparation will help the child to better navigate the classes.
 - a. Talk to your children.
 - b. Expand his or her vocabulary.
 - c. Enquire about understanding.

Czech language for next week:

PROVERBS AND IDIOMS. FOR EXAMPLE: SLY AS A FOX

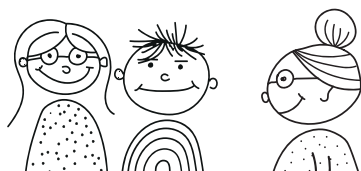
Thank you, we did the exercises.

English language:

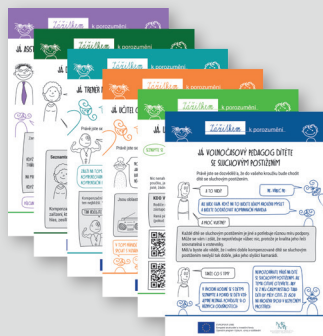
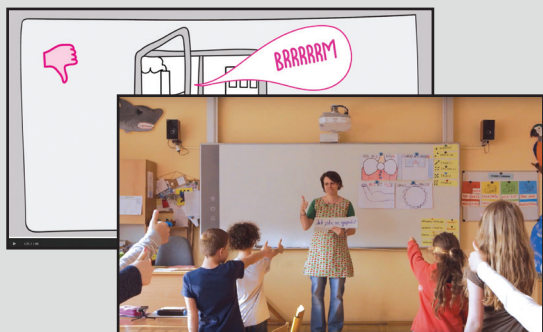
WE SANG JINGLE BELLS.

Thank you, where do I find the lyrics?

HERE: WWW.KOLEDY.CZ



The Understand through Experience project has produced a series of information booklets for teachers, teaching assistants, language teachers, PE teachers, after-school teachers and leisure educators. These brochures can be downloaded from our website. You will also find animations, virtual lessons and methodologies that you can offer to teachers.



More information here:



animation



methods



video tutorials

The translation of materials from Czech to English is in progress.



CONTACT



Mgr. Leona Pejcharová
project leader
l.pejcharova@suki.cz

Mgr. Marína Štibrányi
chief methodologist
m.stibranyi@suki.cz



www.zazitek.zsheureka.cz **FB: @zazitkemkporozumeni**

